



# 17 Comparing places

You can use modifiers before comparatives and superlatives to compare places, such as geographical features, in more detail.

 **New language** Modifiers

**Aa Vocabulary** Geographical terms

 **New skill** Describing and comparing places

## 17.1 KEY LANGUAGE COMPARATIVES WITH MODIFIERS

Use modifiers before comparatives to be more precise about the comparison you are making.

The tree is **a lot / much** taller than the building.

These modifiers mean there is a big difference between the things you are comparing.

These modifiers mean there is only a small difference between the things you are comparing.

The tree is **a bit / slightly** taller than the building.

### TIP

You can't modify comparatives with "very."

## 17.2 KEY LANGUAGE LONG COMPARATIVES WITH MODIFIERS

The palace is **much more** beautiful than the factory.

The modifier goes before "more."

Form long comparatives by putting "more" before the adjective.



## 17.3 LOOK AT THE PICTURES AND CROSS OUT THE INCORRECT WORDS IN EACH SENTENCE



The tree is ~~a bit~~ / **much** taller than the house.

3



The window is **slightly** / ~~much~~ wider than the door.

1



The mountain is **much** / ~~a bit~~ taller than the hill.

4



The lighthouse is ~~a bit~~ / **a lot** taller than the statue.

2



The church is ~~a lot~~ / **slightly** taller than the café.

5



The castle is **much** / ~~slightly~~ bigger than the hotel.

## 17.4 KEY LANGUAGE SUPERLATIVES WITH MODIFIERS

You can use "easily" or "by far" to make superlative adjectives stronger, or "one of" to show that the superlative belongs to a group of things.

The clock tower is **{easily  
by far}** the **tallest** building in the town.

These modifiers make the superlative stronger.  
You cannot use them with comparatives.

The clock tower is **one of the tallest** buildings in the town.

"One of" makes the  
superlative part of a group.

If you use "one of" with superlatives,  
the noun must be in plural form.



## 17.5 KEY LANGUAGE LONG SUPERLATIVES WITH MODIFIERS

This is **by far the most expensive** shop in the street.

The modifier  
goes before "the."

Form long superlatives by putting  
"the most" before the adjective.



## 17.6 SAY THE SENTENCES OUT LOUD, CORRECTING THE ERRORS

This tree is much the tallest.

*This tree is by far the tallest.*



4 India is one of the largest country in Asia.



1 Spain is very warmer than Scotland.



5 The sea is by far colder than the pool.



2 Your house is more much beautiful than mine.



6 This is the most easily expensive hotel in town.



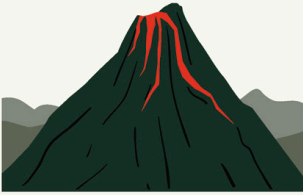
3 The Nile is longer a bit than the Amazon.



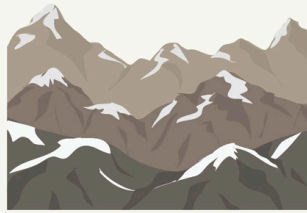
7 The tower is a lot the tallest building here.



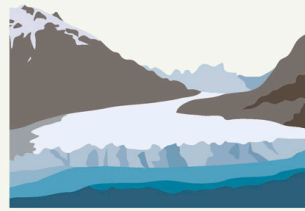
## 17.7 VOCABULARY GEOGRAPHICAL TERMS



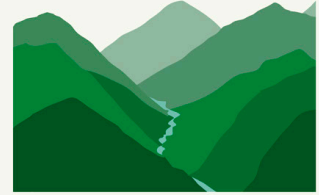
volcano



mountain range



glacier



valley



## 17.8 LISTEN TO THE AUDIO AND ANSWER THE QUESTIONS



Umar and Sharon are taking a quiz about places around the world.

Umar thinks the Himalayas are...

**the tallest mountain range** ☒

**the highest mountain** ☐

**much longer than the Andes** ☐

1 Sharon thinks the Andes are...

**a bit longer than the Himalayas** ☐

**much longer than the Himalayas** ☐

**slightly longer than the Himalayas** ☐

2 What does Umar say about the Niagara Falls?

**It's one of the tallest waterfalls** ☐

**It's the longest river** ☐

**It's by far the tallest waterfall** ☐

3 What does Umar say is off the coast of Japan?

**The highest mountain** ☐

**The Khone Falls** ☐

**The biggest volcano** ☐

4 What does Umar think is found in Antarctica?

**The largest glacier** ☐

**The coldest glacier** ☐

**The widest glacier** ☐

5 Umar says the Pacific Ocean is...

**a bit bigger than the Atlantic Ocean** ☐

**easily the biggest ocean** ☐

**much bigger than the Atlantic Ocean** ☐

6 Umar says Canada's coastline is...

**longer than Australia's coastline** ☐

**by far the longest coastline** ☐

**shorter than Australia's coastline** ☐

7 Sharon says Canada is...

**the world's biggest country** ☐

**a lot bigger than Australia** ☐

**a bit bigger than Australia** ☐



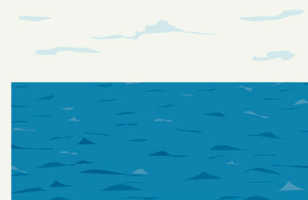
rainforest



waterfall



cliff



ocean



## 17.9 READ THE ARTICLE AND ANSWER THE QUESTIONS

Antarctica is easily the coldest continent on Earth.

True ☒ False ☐

- 1 Death Valley is the driest place in the world.

True ☐ False ☐

- 2 The Atacama Desert is a lot drier than Death Valley.

True ☐ False ☐

- 3 Helsinki has much more daylight time than Reykjavik.

True ☐ False ☐

- 4 The Congo rainforest is the largest one on Earth.

True ☐ False ☐

- 5 The Amazon is slightly bigger than the Congo.

True ☐ False ☐

- 6 The wettest place on Earth is in India.

True ☐ False ☐



### Did you know?



- 1 **Antarctica** is by far the coldest and windiest continent on Earth. It's covered by permanently frozen ground.
- 2 **Death Valley** in California is the hottest place in the world, with temperatures of around 130°F. It's also one of the driest places in the world.
- 3 **The Atacama Desert**, in Chile, is much drier than Death Valley. Some parts of the desert have had no rain for more than 400 years.
- 4 **Reykjavik**, in Iceland, has only 4.07 hours of daylight in December. Helsinki has slightly more daylight time than Reykjavik; around 5.5 hours.
- 5 The two largest rainforests on Earth are the **Amazon** and **the Congo**, but the Amazon is much bigger than the Congo.
- 6 The wettest place on Earth is **Mawsynram**, in India, where the average rainfall is 11,871 mm per year.

## 17 CHECKLIST



Modifiers ☐

Aa Geographical terms ☐



Describing and comparing places ☐